

*NOTE: Membrane array will vary with system capacity*

**RO PERFORMANCE**

Initial Production Capacity  
SDI  $\leq 5$  . . . . .  $\geq 48,000$  GPD (33.33 GPM)

System capacity based on operating with a feed of 500 ppm NaCl at 110 psig, 77°F, and pH 7.5

Max Operating Pressure . . . . . 175 psig  
System Projected Rejection Rates . . . . .  $>95\%$   
Recovery Rate . . . . . 65% (Min) / 75% (Max)  
Higher recovery rates are achieved with reject recirculation.

**FEEDWATER REQUIREMENTS**

Maximum Allowable SDI . . . . . 5 (SDI)  
Maximum LSI (reject side) . . . . .  $< 0$   
Maximum Free Chlorine . . . . . 0.0 ppm  
Operating Temperature . . . . . 33°F - 113°F  
Operating pH . . . . . 6 - 11

**SYSTEM DIMENSIONS (Approximate)**

Height . . . . . 52 inches  
Width . . . . . 144 inches  
Depth . . . . . 40 inches  
Shipping Weight . . . . . 1500 lbs

**ELECTRICAL REQUIREMENTS**

Standard . . . . . 208 / 230 / 460 VAC, 3-Phase  
Hertz . . . . . 50 / 60 Hz  
Current (Full Load) . . . . . 42 / 21 / 17 Amp

Other Electrical Potentials are Available.

**PLUMBING REQUIREMENTS**

Inlet Pipe Size . . . . .  $\geq 2$  inches  
Inlet Pipe Materials . . . . . PVC  
Inlet Required Flow Rate . . . . . 66 GPM (Max)  
Minimum Inlet Dynamic Pressure . . . . . 20 psig  
Maximum Inlet Pressure . . . . . 100 psig

Required Pressure and Flow Rates will Vary  
Dependent on flux and percent recovery.

Inlet Required Pressure . . . . . 20 - 100 psig  
Drain Pipe Requirement . . . . .  $\geq 1\text{-}1/2$  inch  
Recommended Drain Pipe Material. . . . . PVC  
Drain Flow Capacity . . . . . 35 GPM  
Permeate Pipe Size . . . . .  $\geq 1\text{-}1/2$  inch  
Permeate Pipe Material . . . . . PVC or Compatible

## SYSTEM FRAME

Configuration ..... Horizontal  
 Material of Construction ..... Steel  
 Frame Finish ..... Enamel

## SYSTEM PUMP

Manufacturer ..... Grundfos  
 Type ..... C-Series  
 Material of Construction ..... Stainless Steel  
 Horse Power Rating ..... 15 H.P.  
 Motor Enclosure ..... ODEP

## FEED WATER PLUMBING

Connection ..... 2" FPT  
 Material of Construction ..... PVC

## REJECT WATER PLUMBING

Connection ..... 1-1/2" FPT  
 Material of Construction ..... PVC

## WETTED MATERIALS

Brass	Stainless Steel
Polypropylene	ABS
Ceramic	PVC
EPDM	Polysulfone

## REVERSE OSMOSIS MEMBRANES

Manufacturer ..... Toray  
 Model ..... TMG20-400  
 Size ..... 8 x 40  
 Nominal Flow Rating . . . 10,200 GPD at 110 PSI  
 Initial Salt Passage ..... < 5%)  
 Quantity ..... 6

## INSTRUMENTATION

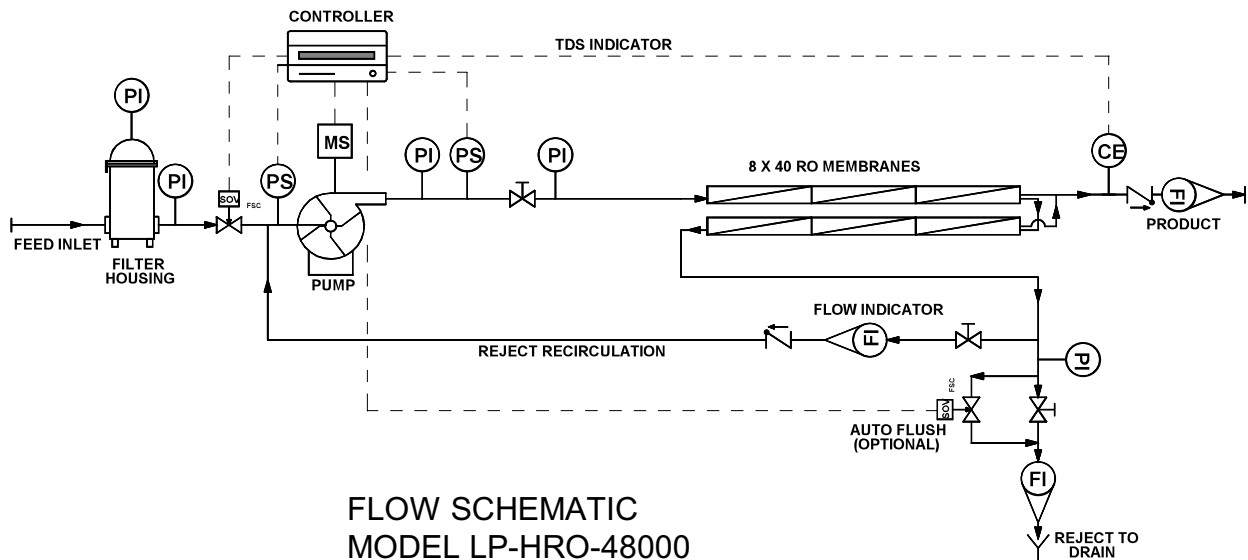
Controller ..... SERIES 150  
 Flow Meters ..... Mechanical Rotometers  
 Pressure Gauges ..... Liquid Filled Brass

## STANDARD FEATURES

Low Pressure Cut-Out	Tank Full Control
TDS Permeate Monitor	Pretreat Lock-out
Aux Pump Output	Alarm Outputs
Temperature Display	Run Hour Display
Inlet Solenoid Cut-Off	Warning Display
S.S. Filter Housing	Reject Recirculation

## OPTIONS

High Pressure Cut-out	Auto Flush
Percent Rejection Meter	TEFC Motor



FLOW SCHEMATIC  
 MODEL LP-HRO-48000

Authorized Dealer

Water Resources Co.  
 8309 Cactus Wren  
 San Antonio, TX. 78255  
 Ph: (210) 698-8960  
 Fax: (210) 698-7719

